

# 2011年西安荷兰生态花园 Holland Eco Garden Xi'an 2011

项目名称: 2011年西安荷兰生态花园  
 委托方: 2011年西安世界园艺博览会  
 设计团队: Tekton Architekten: Bert Tjhie, Thys Schrei  
 Eusino: Tao Wang, Mariska Stevens  
 Archipelontwerpers: Eric Vreedenburgh, Guido Zeck  
 OKRA: Martin Knuit, Eva Radionova  
 Project: Holland Eco Garden Xi'an 2011  
 Principal: Xi'an International Horticultural Exposition 2011 Xi'an  
 Design Team: Tekton Architekten: Bert Tjhie, Thys Schrei  
 Eusino: Tao Wang, Mariska Stevens  
 Archipelontwerpers: Eric Vreedenburgh, Guido Zeck  
 OKRA: Martin Knuit, Eva Radionova

我们受邀设计2011年西安世界园艺博览会的荷兰生态花园项目。为了应对气候变化，荷兰生态花园致力于满足生态区域内城市环境的需要。它将被作为产滴生态区域发展的典范。

生态城市花园所表现的是典型的荷兰景观，大片的传统花卉种植带展现于观者眼前。设计采用“水的循环”这一理念，喻意生活的周而复始。水循环从位于景观顶部的生态馆开始，通过levada水循环系统，蜿蜒流过花园直至花朵型的建筑结构，至此再一次的循环开始。

水循环系统给与了生态馆一种美感。展馆坐落于地下水丰富的抗震盆地上，它的能源来自于风车所产生的风能，其中包括水循环、花房太阳能、地质水热供暖系统以及动能砖所需的能源。

展馆仿佛景观植物群落中若隐若现的小径，立面上布满自然景观的元素，竹子、植被以及自由流动的水。于展馆内行走一周，参观者能够亲身体会并理解驱动展馆的能源是多么的环保。顺着水流的路径，穿过荷兰生态花园一直能够走到花朵型的建筑结构。一旦到达花的展馆，站立于水

中的任何地点，可以看到蜿蜒而上的小径。在展馆的顶端，参观者可以通过望景楼欣赏整个园艺博览会的美景。

花的展馆所体现的并非其功能性，而是其比喻义。设计是通过运算法则进化而来，它所表现的是西安、荷兰两座城市的结合。这是两种文化碰撞的结果。创造这样一种仿佛“花朵”的展馆，也是为了强调农艺与工艺之间不断增强的联系。这座花的展馆与 Archipelontwerpers 事务所之前在海牙所做的“晚礼服”项目相似，该项目曾经于2008年10月刊登于《中国建筑装饰装修》杂志。





剖面图

We have been invited to design the Holland Eco Garden at the coming Xi'an International Horticultural Exposition 2011 Xi'an. In response to climatic changes, the aim of the Holland Eco Garden is to acknowledge the need for an urban environment within an ecological setting. It serves as a model for the Chan-Ba Ecological District development.

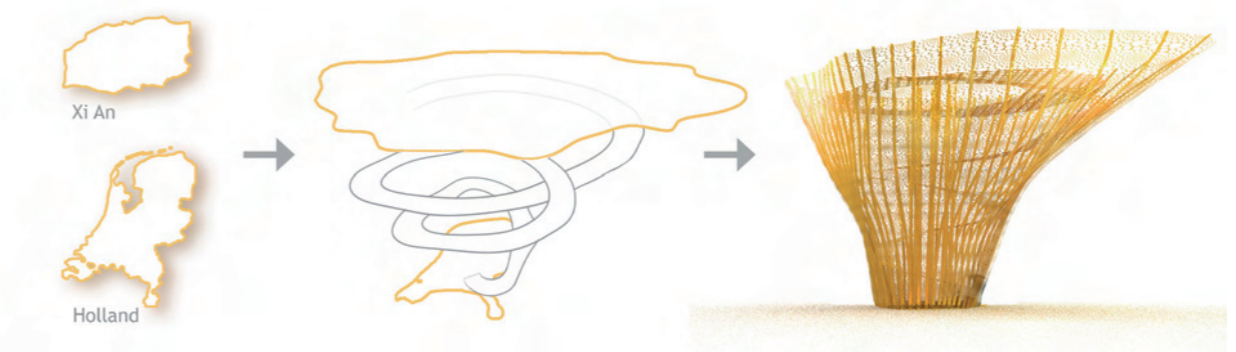
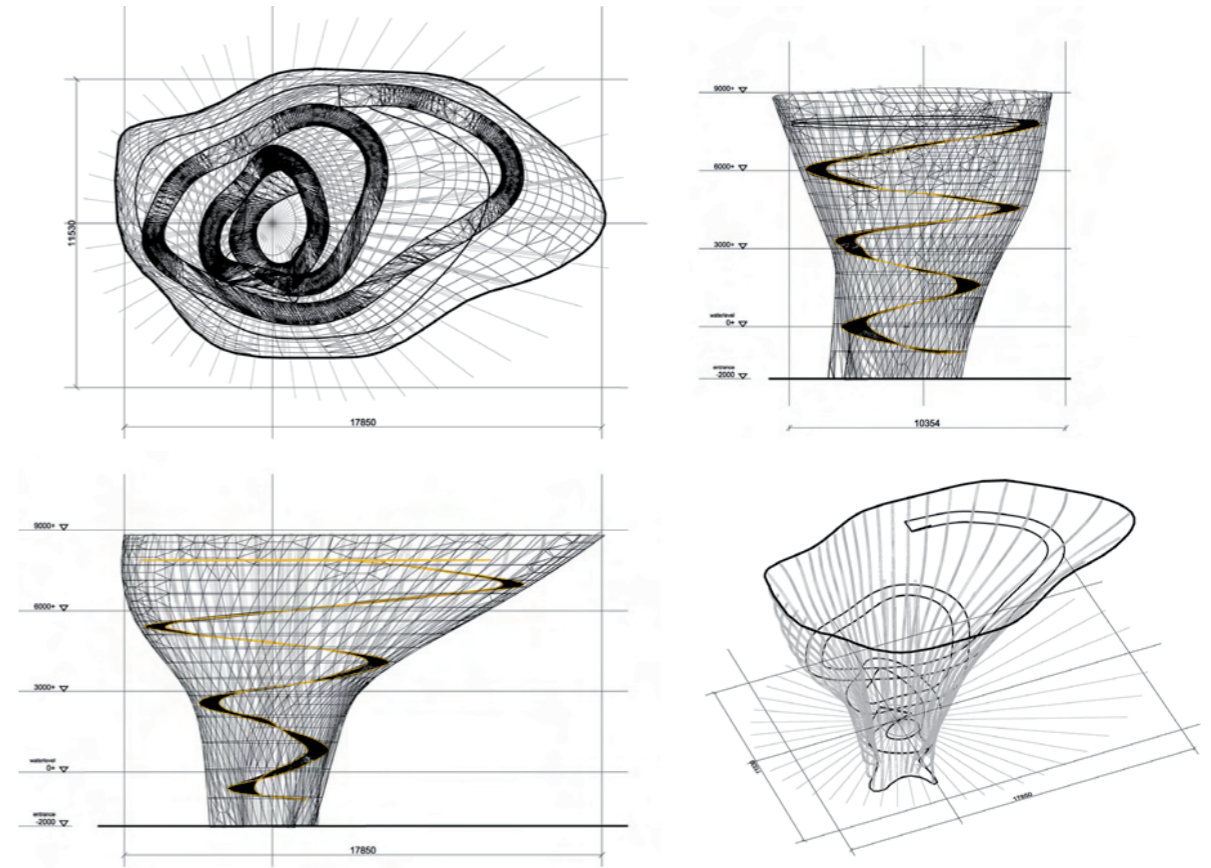
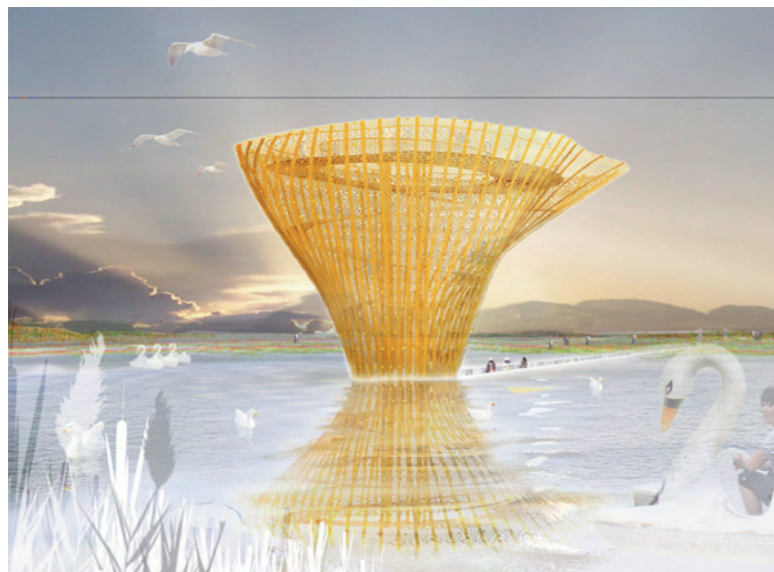
This eco-city garden is representative of a typical Dutch landscape with orthogonal plantation strips displaying traditional flora. The primary concept utilizes the circulation of water embodying the notion of a continuous life-cycle. The water circulates from the top of the landscape through the Eco-Pavilion and using a levada water system, meanders through the garden to the Flower-Folly structure before being pumped up and re-cycled.

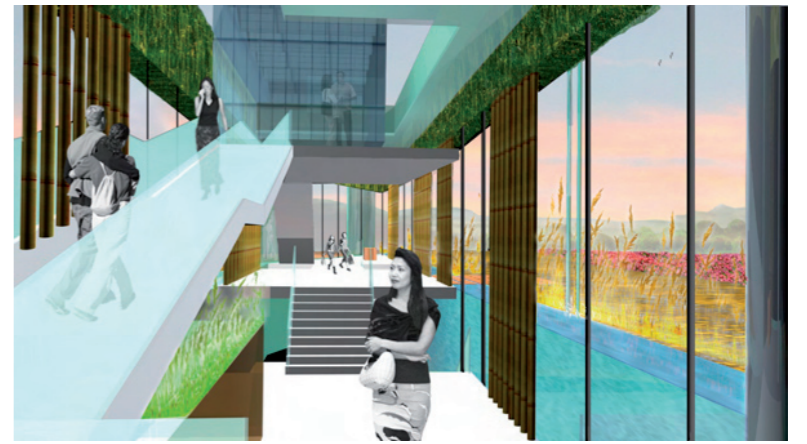
The Eco-Pavilion uses the water system to service the design in addition to providing an aesthetic feature. The pavilion sits on an earthquake-resistant water basin and generates energy through the use of windmills to circulate water, solar power on the greenhouses, geoaqua thermal heat system and kinetic tiles.

The pavilion acts as continual path situated within the floral context of the landscape. It

appears as an elevated strip of land merging with the natural surroundings with its bamboo materiality, vegetation and free-flowing water. The public circulate through the pavilion and in doing so are able to experience and understand the environmental processes that service the pavilion. They then follow the path of the water down through the Holland Eco Garden leading to the Flower-Folly structure. Once arrived at the flower pavilion, free standing in the water, the path is spiralling up through the pavilion. Once arrived at the top a belvedere is showing the visitors a beautiful view over the horticultural expo.

At the Flower pavilion functionality is replaced by a more metaphorical approach. The design is the outcome of an artificial evolution created by an algorithm in which there is made a morf between the outline of the city of Xi'an and Holland. By doing so the pavilion symbolizes the meeting of our cultures. In creating this shape the pavilion also refers to an artificial flower emphasizing the ever increasing relation between agriculture and technology. The construction of the flower pavilion is similar to a previous project by Archipelontwerpers, the Ball Gown in The Hague as can be seen in the October 2008 issue of Interior Architecture of China.





### 创意设计联盟

#### Alliance NL

创意设计联盟 (Alliance NL) 是荷兰一家综合性的联盟组织，为生态城市设计提供一站式的解决方案。创意设计联盟具有独特的组织形式，它通过实力雄厚的设计事务所之间的彼此协作，为人工环境创造最佳的可持续发展的解决方案。每一个事务所都有其设计重点，因此项目的每一个方面都极具优势，充满创新的元素。在中国，创意设计联盟致力于为各个领域提供可持续方案，实现其长期的发展目标。因此，它将计划与长期发展相结合，为其设计奠定了坚实的基础。通过对地区的愿景规划以及政府房屋政策的研究，因地制宜，使得项目深深地植根于当地文化。

创意设计联盟的成员：Tekton Architekten, Eusino, Urban Visions, Mattmo, Archipelontwerpers, Atelier Dutch, OKRA, Inno Experts

合作院校：代夫特技术大学 爱因霍芬科技大学 海牙皇家艺术学院以及其他院校  
Alliance-NL is a Dutch multi-disciplinary consortium that offers one-stop solutions for the design of new ecological cities. Alliance-NL offers a unique organizational process in which strong design offices collaborate in order to create the best sustainable solutions for the built environment. Each has its own design focus so that each aspect is dealt with through excellence and innovation. In China, Alliance-NL aims at a long term development strategy by offering sustainable solutions in every respect. Therefore, Alliance-NL integrates programmatic features for long term development, so that its designs have a solid base. By doing research on long term regional planning and governmental housing policies and by adapting solutions to local characteristics, local embedding of our projects is ensured.

Members Alliance NL: Tekton Architekten, Eusino, Urban Visions, Mattmo, Archipelontwerpers, Atelier Dutch, OKRA, Inno Experts

Partner Institutes: Technical University Delft, Technical University Eindhoven, Royal Academy of Arts The Hague and several others.

