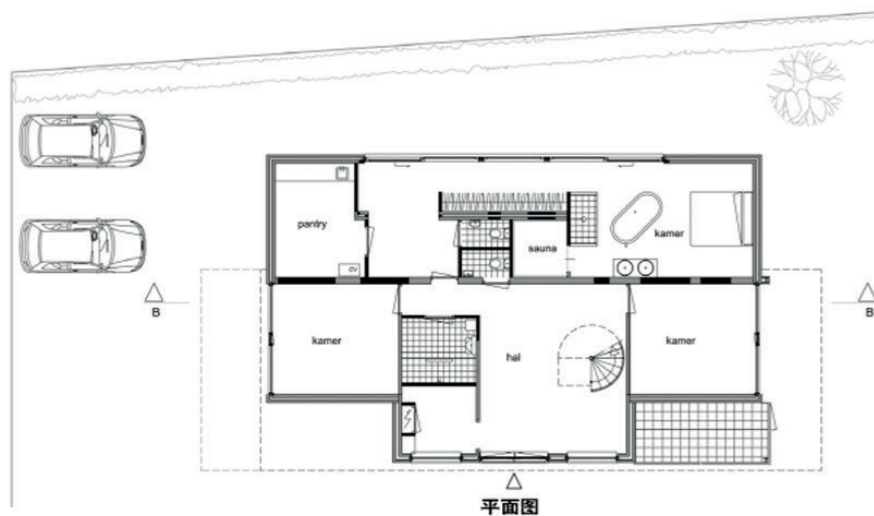




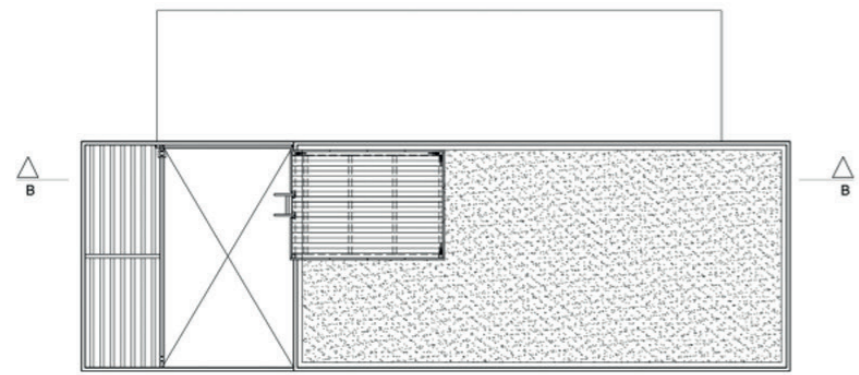
项目名称：凯特之家
 甲方：凯特家
 设计团队：Eric Vreedenburgh, Coen Bouwmeester
 项目地址：卑尔根奥普佐姆，Marathonlaan
 Project: The Cats House
 Principal: Family Cats
 Design team: Eric Vreedenburgh, Coen Bouwmeester
 Location: Marathonlaan, Bergen op Zoom

凯特之家 The Cats House

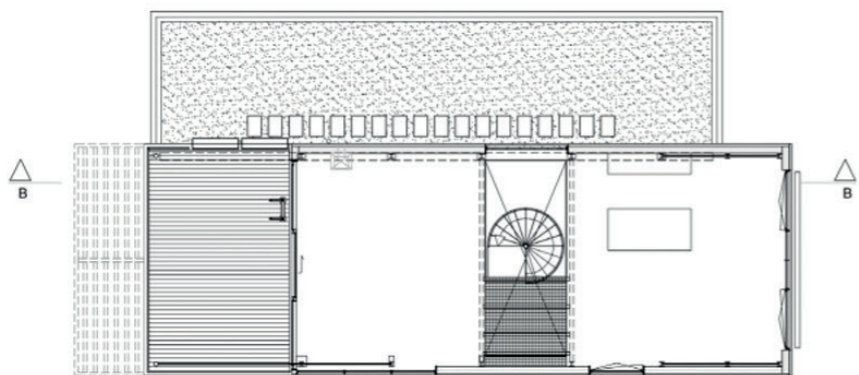


凯特之家是另外一个屋顶扩张的范例。Archipelontwerpers公司在原有的一座普通办公平房之上设计了一架轻质的钢结构建筑。由于原有地基有限的承载能力，项目的关键就在于极度轻巧。新建的部分由一个开放的柔性空间和不同层面上的露台构成。办公室一层被改建为入口大厅以及卧室区域。Archipelontwerpers公司采用简洁的工业铝覆层系统以及轻质钢结构。除了厨房以及不锈钢扶手部分之外，所有内部以及外部钢制部分都经过了电镀。屋顶装有PV太阳能电池板。

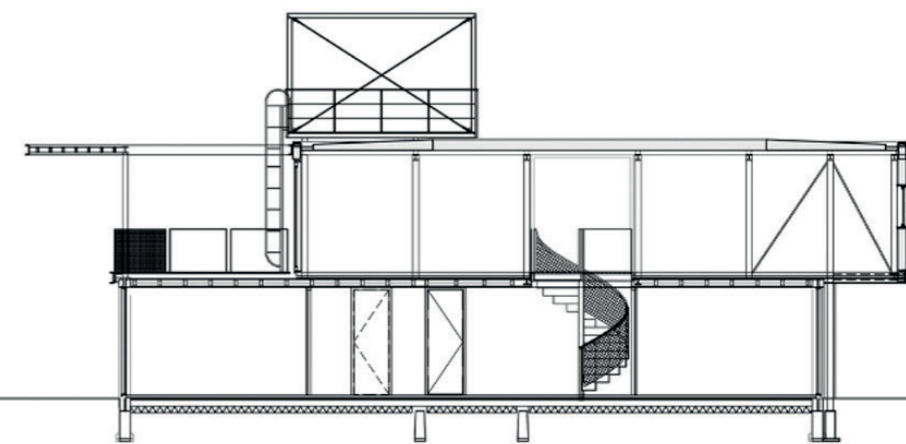




平面图



平面图



剖面图



The house of family Cats is another example of a rooftop extension. Archipelontwerpers designed a lightweight steel construction on top of an existing modest office bungalow. Because of the limited bearing capacities of the existing foundation, it was essential to do this project extremely lightweight.

The new volume contains an open flexible living and some terraces on different levels. The office lay-out of the first floor was transformed into the entrance hall and a bedroom area. Archipelontwerpers used an easy industrial aluminium cladding system and a lightweight steel frame. Except the kitchen and the stainless steel railing system, all the internal and external steel components are galvanized. The roof is rigged out with PV solar panels.

