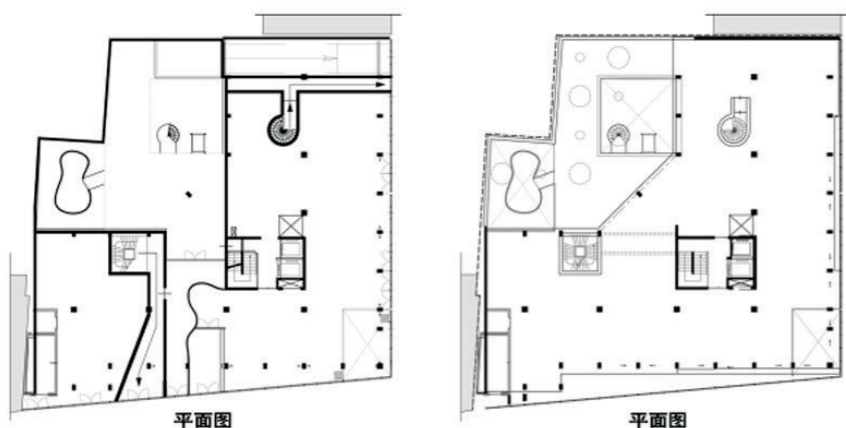


项目名称: Astoria大楼改造
 甲方: Geste Groep
 设计团队: Eric Vreedenburgh, Coen Bouwmeester, Guido Zeck, Jaap Baselmans, Sander Malschaert, Jos van Heerde, Bas Verhagen
 项目地址: 海牙, Stationsweg
 Project: Transformation Astoria Building
 Principal: Geste Groep
 Design team: Eric Vreedenburgh, Coen Bouwmeester, Guido Zeck, Jaap Baselmans, Sander Malschaert, Jos van Heerde, Bas Verhagen
 Location: Stationsweg, The Hague

Astoria大楼改造 Transformation Astoria Building



平面图

平面图



平面图



这座办公大楼建于八十年代早期，就在原来Astoria酒店的位置上，位于海牙火车站的前面。它是一座非受力砖覆混凝土建筑，拥有地下停车场以及二层购物区。

对于Astoria大楼的改造与转换是复兴火车站周边地区计划的一部分。由于Astoria正对车站，所以在城市改进升级的进程中扮演着非常重要的角色。我们主张把最下面两层的办公空间转变成带有更多公共功能的住宅。作为规划的一部分，砖的外立面将会被改造成显眼的轻钢立面。由于重量减少了，在已有建筑顶层建造一个六层的轻质建筑就成为可能。

丰富多彩、形态各异的建筑使得城市内部更具吸引力。

现如今，荷兰古老的Spoor火车站的优雅气质由于对面两座沉闷的砖建办公楼而逐渐消逝。现在，机会来了，对其中的一座建筑进行改建，它将改变给人的默默无闻以及呆板的印象。

这个复兴项目包括主题以及视觉上的改变。城市内部应该再次成为适宜居住的地方。必须找到新的动力，带有露台的商店、高端餐馆、咖啡馆应该再次焕发活力。这个办公室将被改建成二层商店，三层用于娱乐以及运动的空间。

此外，新建的现代立面将与周边地区乏味枯燥的建筑形成鲜明的对比，它将成为新时代的催化剂。立面Cor-ten钢细丝借鉴旧火车站的铸件及锻造工艺打造，并为整座建筑注入了新的活力。

This office building was constructed in the early eighties on the spot where hotel Astoria once stood, in front of the Railway station of The Hague. It consists of a concrete structure with non-bearing brick cladding. The basement holds parking places and shops are situated on the first floor.

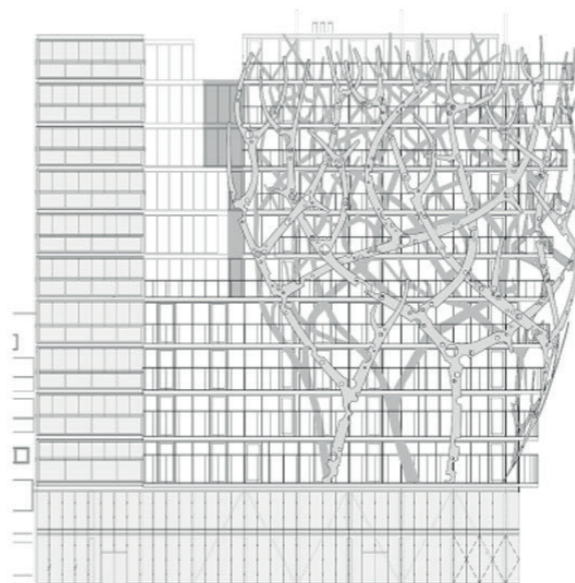
The renovation and transformation of the Astoria building is part of a larger scheme to revitalize the whole neighborhood around the railway station. Because of its location directly opposite the station Astoria will play a major part in this process of urban upgrading. Our proposition is to transform this office into a residential building with more public functions in the two bottom layers. As part of this plan the brick facade will be replaced by a striking lightweight facade. The reduction in weight makes it possible to place another six layers of a lightweight construction type on top of the existing structure.

Attractive inner city areas depend on a rich spectrum of differentiated buildings.

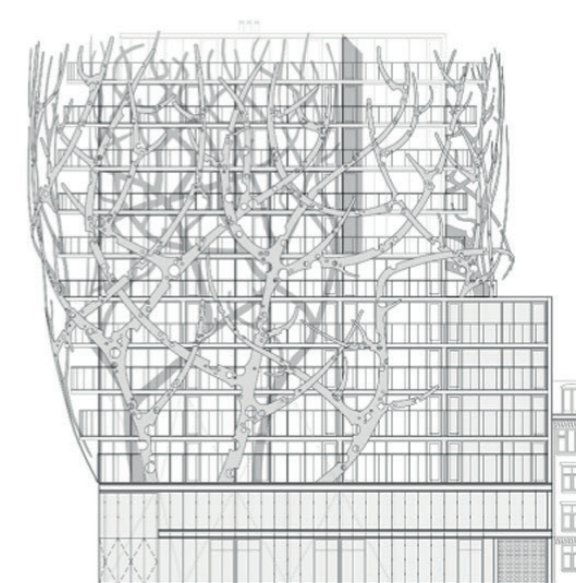
In the present situation the elegance of the old Holland's Spoor station is nullified by the two dreary brick office buildings opposite. Neither do the neo-modernist alterations of the eighties deliver the variation and quality that one may expect of the city entrance of a seat of government. Now the opportunity arises to change one of these buildings it should be taken to make it rise above the predominant anonymity and rigidity.

The ingredients of this revitalization consist of programmatic and visual changes. The inner city must become a place to live in again. New initiatives must be developed, shops, high-end restaurants and cafés with terraces should get a chance to start up. The office program will be replaced by housing with shops on the first floor and recreation and sports on the second.

Furthermore the new contemporary facade will be a welcome contrast to the bland and anonymous architecture that is predominant in the neighborhood and may serve as a catalyst for new élan. The Cor-ten steel filigree of the facade is a reference to the cast and wrought iron constructions of the old station and imbues the building and its surrounding space with a renewed vitality.



朝向火车站的立面



东北立面